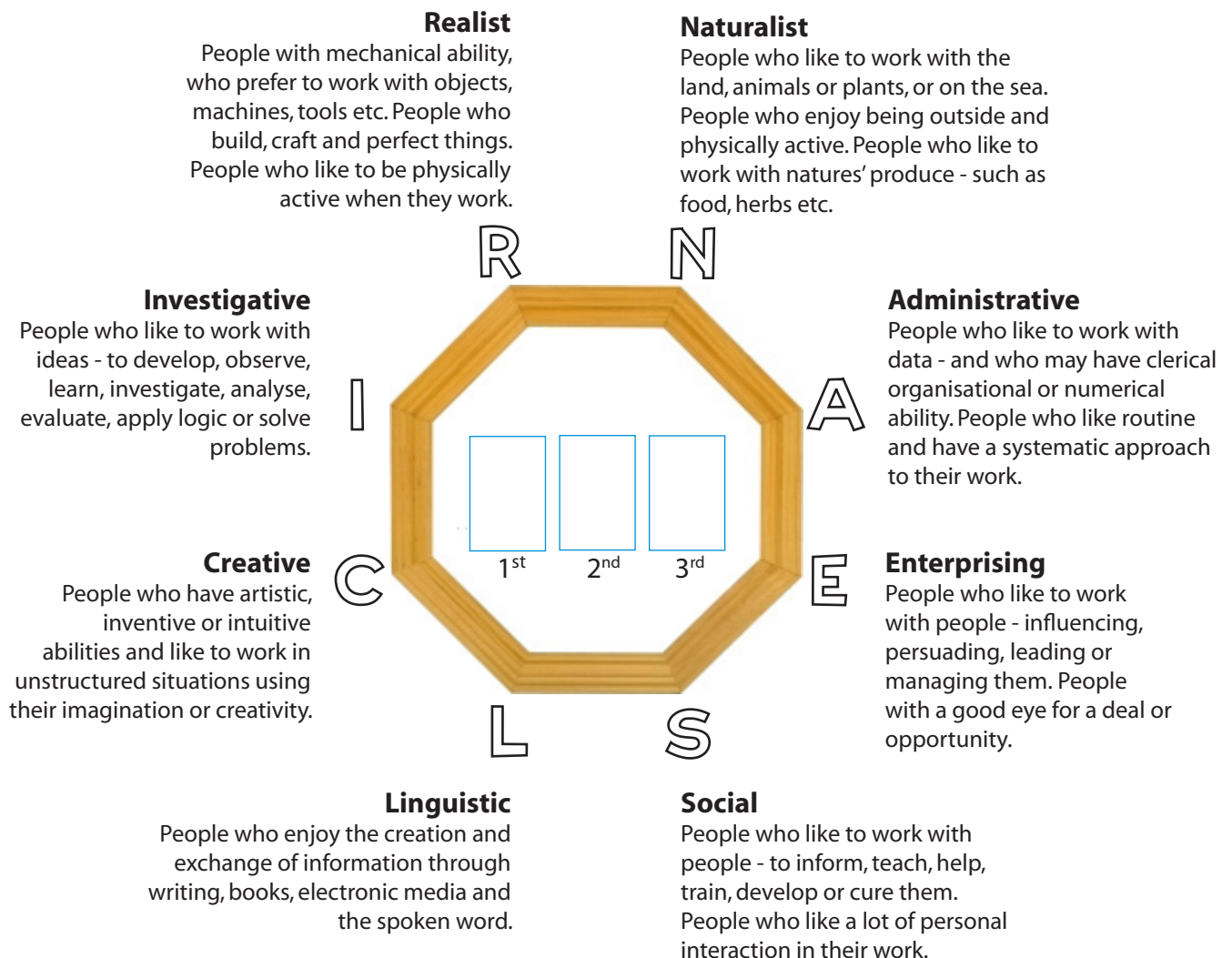


Community Project Exercise

An important local community project is to take place and requires the assistance of large numbers of workers to get under way. The Project Manager is looking for people to assist with the project, and has approached your school/college for teams of workers. With no specific jobs in mind, the Project Manager has asked that students join a group that enjoy certain types of work.

Read the descriptions of the groups as described below.

- 1 Imagine yourself joining the group of people you would most enjoy being with. Enter the letter corresponding to that group into the center of the diagram in the 1st place.
- 2 Imagine that the project manager announces that he has enough people in the group you just joined, and requests that you join one of the remaining groups. Imagine yourself joining the group you would next most enjoy being with. Enter the letter corresponding to that group into the center of the diagram in the 2nd place.
- 3 Finally, select the third group that you would enjoy joining and mark this in the third place in the center of the diagram.



The letters you entered in the center of the diagram form a code (e.g. IAR, NRS etc.) which can be used to link your choices to occupations that are characterised by people with similar interests to yours. You can use this information to help you select a career path.

A more complete measure of your interests can be made using a career interest test. You can take a full test online at www.careersportal.ie, and get a free printout and interpretation report with career suggestions.